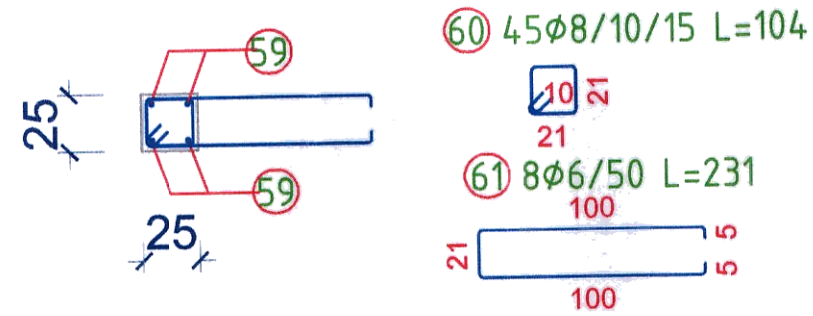


S9 (25x25cm)
- section -



POSITION	N. BARS	Ø [mm]	L [cm]	TOT L. [m]	WEIGHT [kg]	CODE	PATTERN [cm] (to the ext. boundary)
59	4	14	565.0	22.60	27.30	212	15 535 15
60	45	8	104.0	46.80	18.49	595	10 21 21 100 55 100
61	8	6	231.0	18.48	4.10	454	21 100 100
TOTAL WEIGHT:					49.89		

Conform P100-2013

$T_c = 0,70s$; $ag = 0,25g$

CLASA DE IMPORTANTA: III

CATEGORIA DE IMPORTANTA: C

MATERIALE:

- Beton:

- C16/20 in stalpi, centuri.

- Otel beton:

- PC52,OB37.

CLASA BETON

C16/20 XC1 CEM II A-S 32.5R(min. 260kg/mc) A/C:0.60

S.C. ARHIAMA STRUCTURI DESIGN S.R.L.			Beneficiar : SPITALUL DE RECUPERARE BRADET		Pr : 138
PROIECTAT ing.Gheorghe PINTILIE			Proiect CONSTRUCTIE SALA VESTIARE PERSONAL SI CIRCUIT SEPARARE TRANSPORT LENJERIE		Data : 2022
DESENAT ing.Gheorghe PINTILIE			COMUNA BRADULET, SAT BRADETU, JUD. ARGES		Pl. nr: R18r1
			Stalpi 25x25cm - vedere 4-4		Scara: